



**HOW OUR MODEL NUMBERS WORK:**  
This model is a **I518VC1-S**. This is the most common unit, and 1<sup>st</sup> unit in our industrial line up...

- The **1<sup>st</sup>** letter lets you know what series or line up the unit falls under. I for industrial, C for commercial, D for duplex.
- The **I** represent our industrial, meaning it is in our industrial line up, all industrial models are 2-stage 175psi, & have a 1725 RPM true industrial motor standard.
- The **5** represents the horse power. This unit is 5 horse power.
- The **1** represents the electrical phase of the unit. This unit is single-phase.
- The **8** is the tank size. This unit has an 80-gallon tank.
- The **V** represents the tank orientation. This unit has a vertical tank.
- The **C1** is the pump model. The C1 is our two-cylinder 5-7.5 horse power pump.
- The **-S** represents a magnetic motor starter being mounted/wired. (mag starter required on all industrial models)



**About Us:**

CASTAIR Inc was started in 1991 by Pat Kelly. We are a Family Owned & operated Industrial Air Compressor Manufacturer located in Spicer MN. With a combined 59 years in the air compressor industry Pat and his son Clint Kelly are ready to be the air compressor specialist you need. We specialize in ALL CASTIRON piston and rotary screw air compressors for custom applications. We offer compressors to fit any job, small to large. Brand X or our brand we are here to help and be the specialist you need in the air compressor industry. DO NOT HESITATE TO CALL!

**Contact Us:**

Phone: 320-796-0851  
Email: INFO@CASTAIRMN.COM  
Web: www.castair.net

**CASTAIR INC**  
8894 47<sup>TH</sup> ST NE  
SPICER, MN 56288



**YOUR GO TO SOURCE  
FOR ALL THINGS AIR  
COMPRESSOR**  
**"DEMAND MORE DEMAND  
CASTIRON"**

*TRY AND HAVE THE CATALOG  
ON HAND WHEN CALLING!*



*BGAC1M belt guard aftercooler mounted.*

**WE HAVE A FULL LINE OF FACTORY MOUNTED OPTIONS. WITH FIELD MOUNTING KITS AVAILABLE FOR OUR BRAND OR ANY BRAND AIR COMPRESSOR.**

**OPTIONS INCLUDE:**

- Low oil shut off switch
- Hour meters
- Automatic tank drains (air/electric operated)
- Intake noise silencers (1" NPT in/out, up to 10 dba noise reduction)
- Belt tensioners
- Dual control valves (continuous run option)
- Belt guard aftercoolers. Gives up to a 65% reduction in moisture (pictured above.)
- Right from the start kit. Saves customer 10% buying as a kit. Kit Includes: 4-rubber vibe pads,1-gal of oil,2-air filters,1-3/4" npt ball valve,1-3/4" npt stainless steel braided flex line.

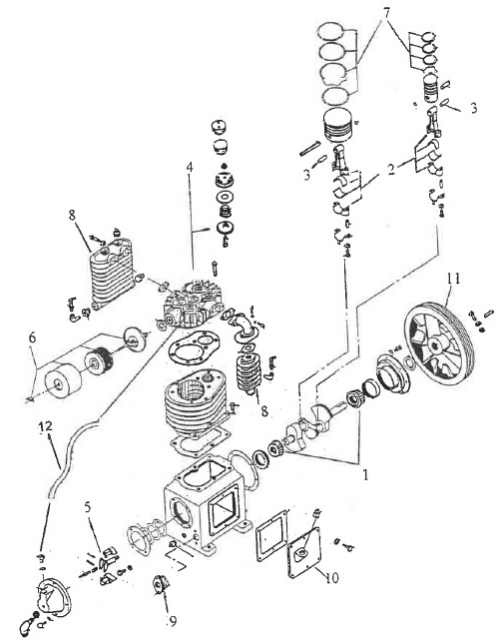
**OUR BRAND OR ANY BRAND AIR COMPRESSOR!!**

Our brand great! Any other brand air compressor is just fine as well.... We are here to be your go to source in the very intricate and specific industry of air compressors. So, no matter what brand, what problem or questions you or your customer might have, don't hesitate to call us at CASTAIR! We have access to many brands and models for parts and or aftermarket add on accessories. We are more than happy to help with just a simple answer to a question.

**Get your customers what they need if their compressor goes down! Getting them back to work, and happy!**

**Get your existing customers what they need for their existing compressors!**

We have access to almost all makes and model air compressors regular maintenance items like oil, filters, gaskets etc....



**OUR PUMPS:**

1. Tapered roller bearings at both ends of crankshaft, for less friction and more bearing area on shaft vs ball bearings.
2. All steel connecting rods with automotive type rod insert bearings at crankshaft.
3. Needle bearings at wrist pin.
4. Disc & spring valves for high efficiency & reliability. Whole valves can be easily removed from the top without need to remove head.
5. Centrifugal unloader for load less start-up every time.
6. Easy to change automotive type air filter.
7. Pistons have 4-rings for higher efficiency/less oil carry over.
8. Finned cast iron intercooler/aftercooler for max heat dissipation.
9. Easy to read brass sight glass to ensure proper oil level at a glance.
10. Side covers for easy access to rods & crankshaft.
11. Massive balanced flywheel with deep fan blades for maximum cooling & smooth operation.
12. Positive crankcase vent for cleaner, quieter operation.